

Spandrel Detail

A MERRONBROOK LTD DETAIL



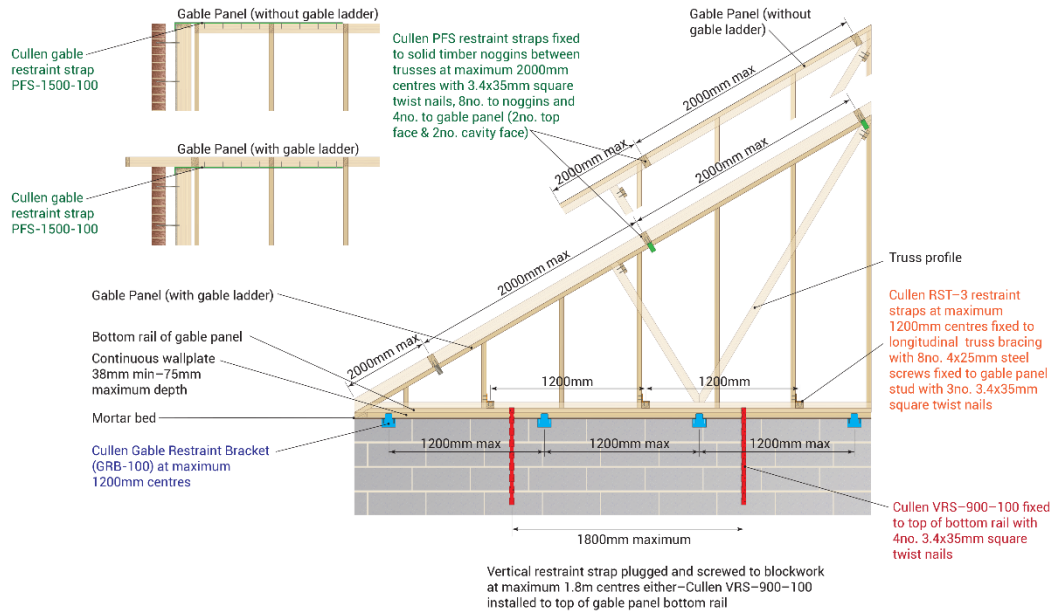
— DELIVERING TIMBER ENGINEERING EXCELLENCE

Hazeley Bottom | Hartley Wintney | Hook | Hampshire | RG27 8LU

Tel: 01252844747 | E-mail: sales@merronbrook.co.uk | Web: www.merronbrook.co.uk

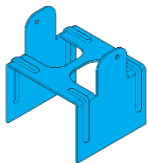
Timber Gable to Masonry Fixing Detail

The details have been developed to safely transfer lateral wind load on the masonry and timber gable ends into the braced roof diaphragm. This provides a verified connection between timber gable panels to masonry walls. The details meets the minimum requirement of Building Regulations 2010 approved document A, NHBC Standards for houses of three storeys or less in England and Wales. This detail is accepted by NHBC.



MERRONBROOK Supply List

NOT TO SCALE



GABLE RESTRAINT BRACKET
PART NUMBER:
GRB-100

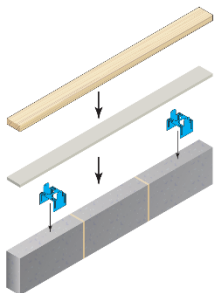
VERTICAL WALLPLATE STRAP
PART NUMBER:
VRS-900-100

RESTRAINT TWIST STRAP
PART NUMBER:
RST-3

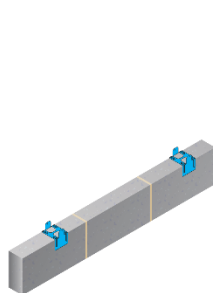
GABLE RESTRAINT STRAP
PART NUMBER:
PFS-1500-100



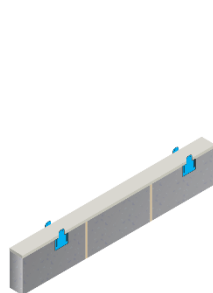
Gable Restraint Bracket Installation



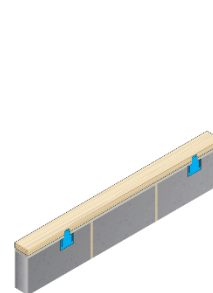
- Components:**
- Wallplate
 - Mortar
 - Gable Restraint Brackets
 - Wall



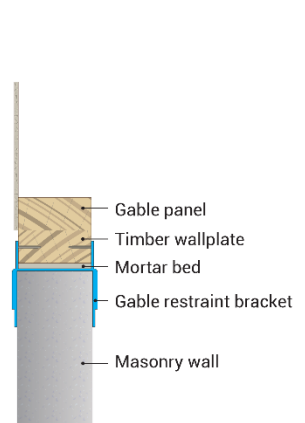
Gable restraint brackets placed on wall at 1200mm* maximum centres (no fixings required).
*for buildings up to 3 storey England & Wales and 2 storey Scotland



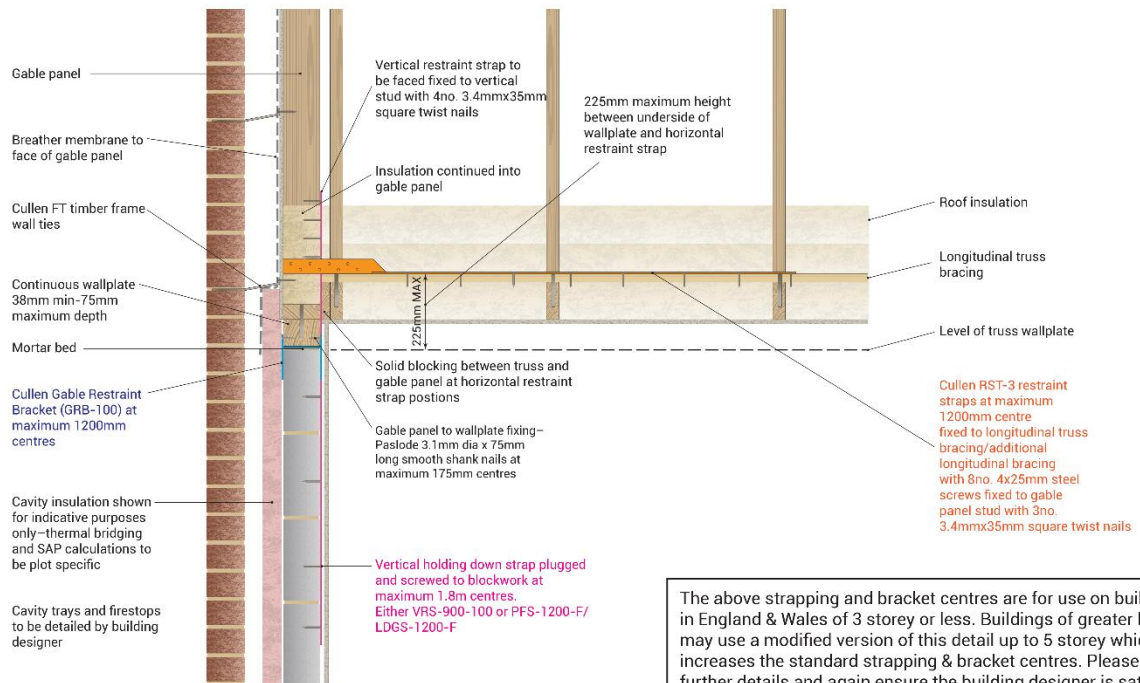
10mm maximum mortar bed on wall prior to wallplate being fixed.



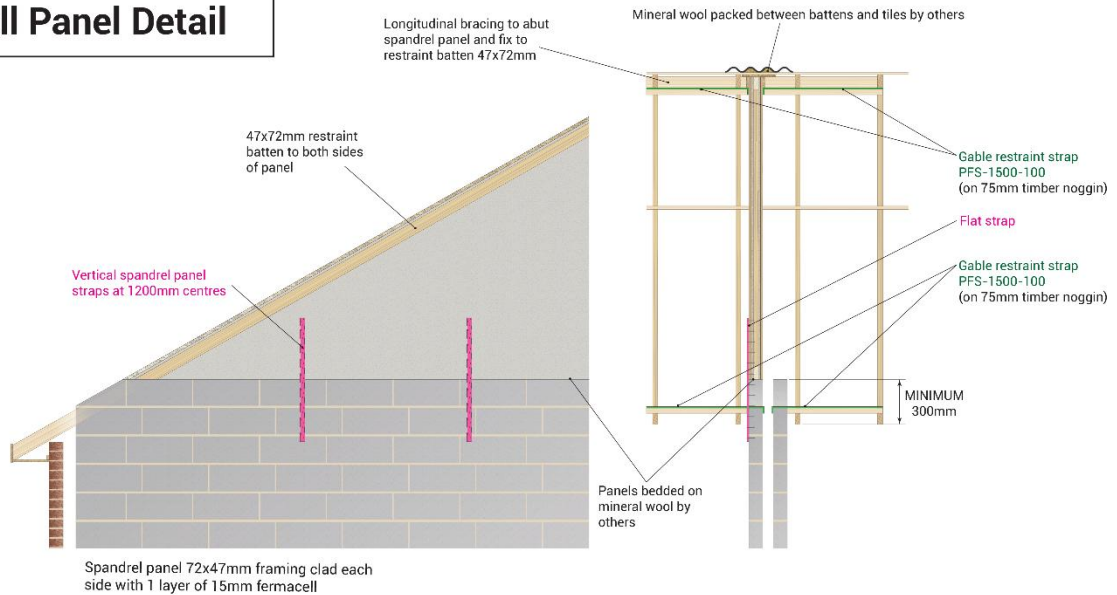
38-75mm wallplate bedded on mortar and fixed to gable restraint brackets with 3 5x40mm wood screws (2 no per bracket)



Timber Gable to Masonry Fixing Detail



Party Wall Panel Detail



MERRONBROOK Supply List

NOT TO SCALE



FLAT STRAP
PART NUMBER:
LDGS-1200-F

GABLE RESTRAINT STRAP
PART NUMBER:
PFS-1500-100

FLAT STRAP
PART NUMBER:
LDGS-1000-F

SCAN FOR E-BROCHURE



SCAN FOR WEBSITE



— DELIVERING TIMBER ENGINEERING EXCELLENCE

Hazeley Bottom | Hartley Wintney | Hook | Hampshire | RG27 8LU

Tel: 01252844747 | E-mail: sales@merronbrook.co.uk | Web: www.merronbrook.co.uk